



Welcome to DonorConnect: Working for Equity

- Audio: We're playing music. If you can hear it, your audio is working!
- You have automatically been muted.
- Tech issues? Please use the chat box.

1

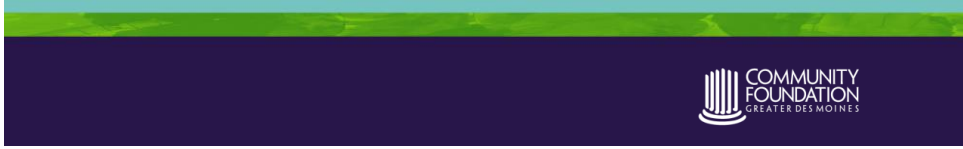


DonorConnect: Conversations that Count Series

Working for Equity

July 21, 2020

2

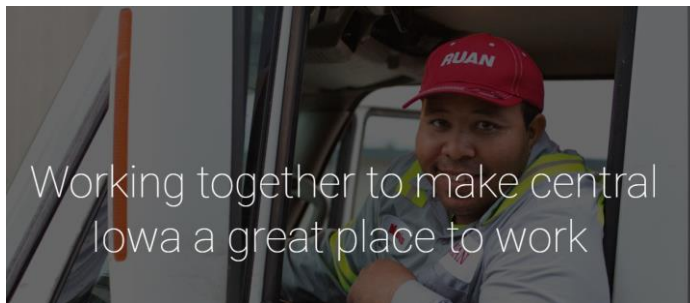


Helping people
connect to
career goals
and achieve
financial stability.


Evelyn K. Davis Center
FOR WORKING FAMILIES



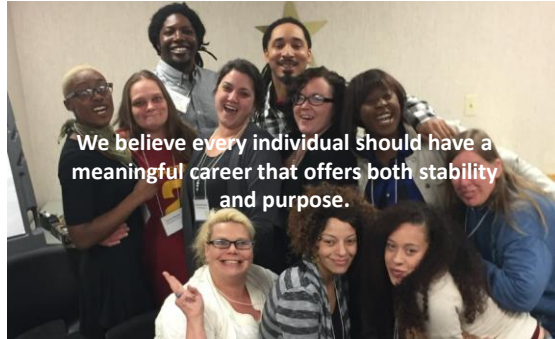
3



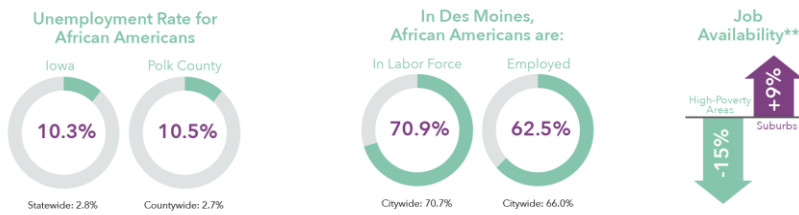
Working together to make central
Iowa a great place to work


CENTRAL
IOWA
WORKS

4



5



MEDIAN HOUSEHOLD INCOME PER YEAR
\$33,816 / \$63,530

The median household income for Black or African American households in Polk County is \$33,816. In comparison, the median household income for all of Polk County is \$63,530. Between 2014 and 2017, the median household income for Black households increased at twice the rate that the median household income for the total population increased.

One Economy Blueprint 2020 <https://www.tdcdsm.org/one-economy>

6



MEDIAN HOUSEHOLD INCOME PER YEAR
\$48,328 / \$59,955

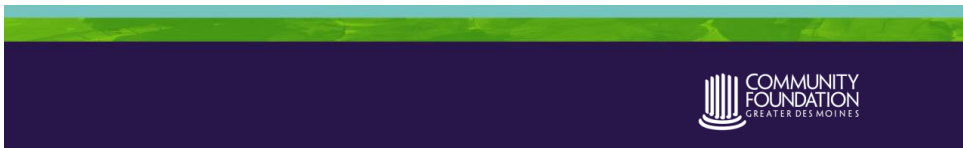
The median household income for Latino households in the State Iowa is \$48,328. In comparison, the median household income for the entire State of Iowa is \$59,955.

75.3% OF IOWA LATINOS AGE 16 AND OVER IN THE LABOR FORCE IN IOWA. THE PERCENTAGE OF IOWANS AGE 16 AND OVER IN THE LABOR FORCE WAS 66.9%

6.8% WAS THE UNEMPLOYMENT RATE OF IOWA LATINOS IN 2018. IN COMPARISON, THE STATE OF IOWA'S UNEMPLOYMENT RATE WAS 3.6%.

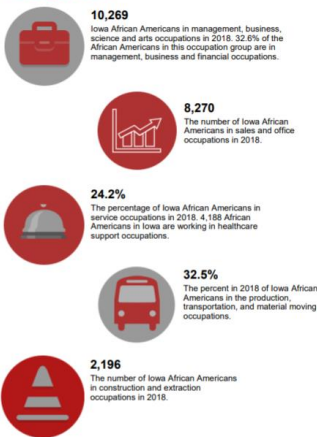
<https://www.iowadatecenter.org/>

7



AFRICAN AMERICANS IN IOWA (2020)

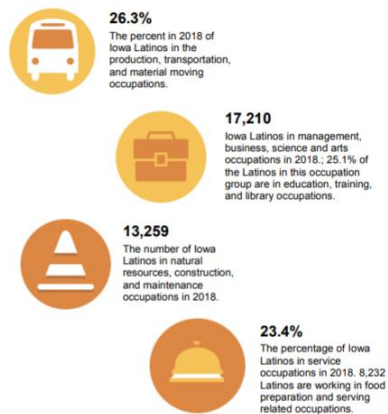
Occupation



<https://www.iowadatecenter.org/>

LATINOS IN IOWA (2019)

Occupation



8



Make this a Conversation that Counts.

9



CONTINUE LEARNING ABOUT RACIAL JUSTICE... and then ACT.

Podcasts, books, articles. Dive into the One Economy report.

Remember: "Knowing is not enough; we must apply.

Willing is not enough; we must do."

Johann Wolfgang von Goethe

LEARN ABOUT PROGRAMS AND HOW YOU CAN SUPPORT THE EFFORTS.

Understand more about programs that provide services to individuals to secure and maintain meaningful employment.

Ask question about progress using a racial equity lens.

Financial & social connections are critical contributions you can make.

10



REJECT "US AND THEM" ... and EMBRACE "WE."

Engage in facilitated conversations with "them" so you can appreciate who "they" are. Then you'll realize the power of "We."

GIVE.

*Invest in organizations that are led by/ served by people of color.
Support leadership development programs.
Support BIPOC (black, indigenous, people of color) owned businesses.
Invest in communities and organizations that focus on residents developing the resources needed for success.
Connect with Community Foundation staff and GIVEdsm.*

ENGAGE IN POLICY DISCUSSIONS.

Organizational policies to legislative action require engagement.

11



It takes all of us to make this a
Conversation that Counts.

THANK YOU.

12